



# Vector Drive - Intake Filter - Installation

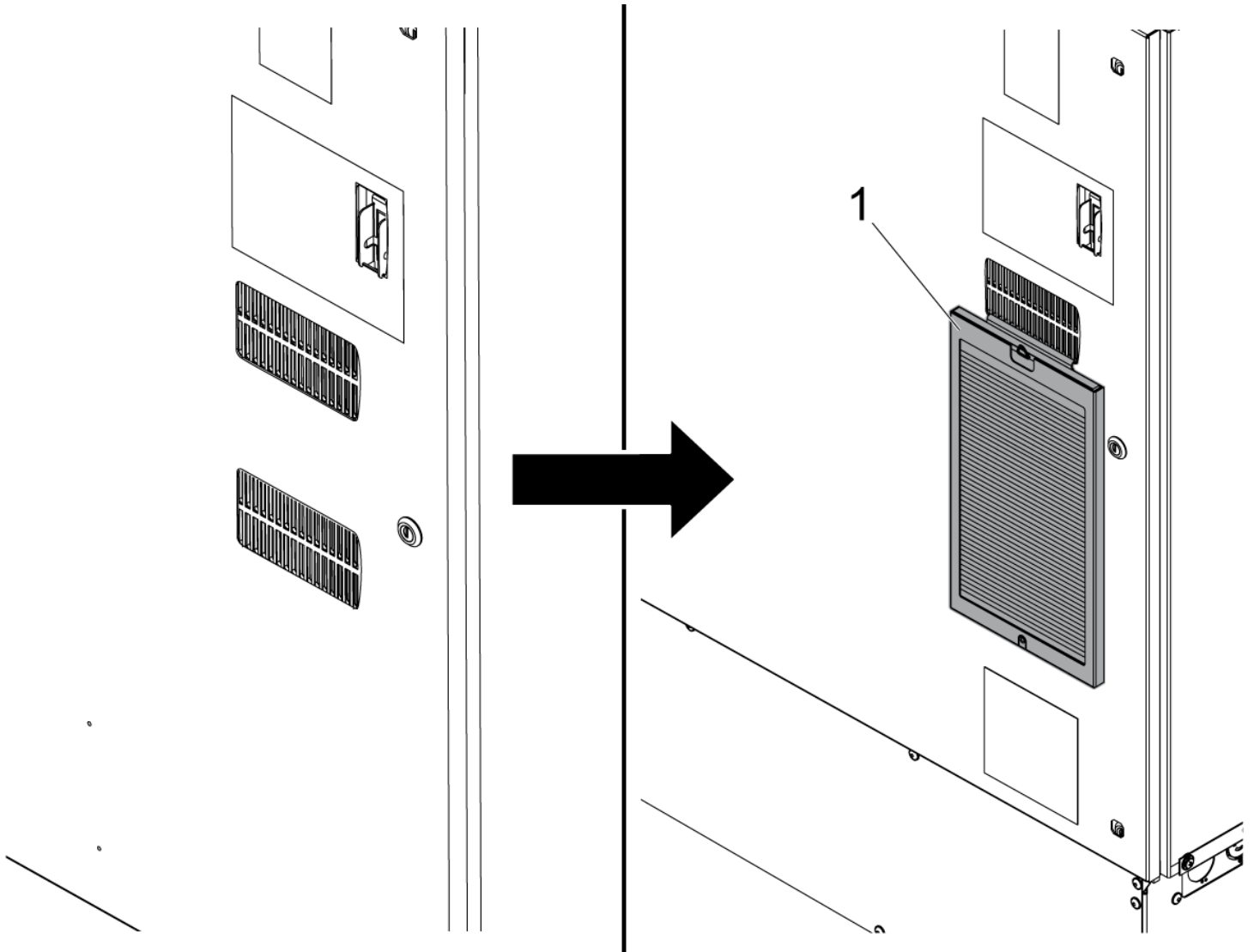
Scan code to get  
the latest version  
of this document




Translation  
Available

## Electrical Cabinet - Vector Drive - Intake Filter - Installation - Introduction

This procedure tells you how to install the intake filter [1] for the vector drive.




 **Caution:** When you do maintenance or repair on CNC machines and their components, you must always follow basic safety precautions. This decreases the risk of injury and mechanical damage.

Do these steps before you do work in the machine or in the control cabinet:

- Set the main circuit breaker to the **[OFF]** position.
- Use an approved lock with an approved safety tag. Always follow lock-out procedures in accordance to local government rules.
- After turning off the machine, wait at least 5 minutes before working in the control cabinet, to allow power to dissipate. Wait for the voltage indicator LED on the vector drive to go off completely.
- Always turn off the main air supply when you work on any part of the pneumatic system.
- Make sure to rest the spindle head on a block of wood when work is done on a vertical axis. This will prevent any unintended movement that could result in the axis falling.
- **Never** alter any safety circuits on the machine.
- **Never** change any parameter while in DEBUG mode (Classic Haas Control) and the servos ON. Put the machine in Emergency Stop mode to change any parameters.
- **Never** operate the machine in DEBUG mode (Classic Haas Control).

You should not do machine repair or service procedures unless you are qualified and knowledgeable about the processes. Serious damage to the machine components can result in costly repairs. The service technicians at your Haas Factory Outlet (HFO) have the training and experience, and are certified to do these tasks safely and correctly. The repair and service work performed by your HFO is protected with a limited warranty.

 **Danger:** Some service procedures can be dangerous or life-threatening. DO NOT attempt a procedure that you do not fully understand. If you have any doubts about doing a procedure contact your Haas Factory Outlet (HFO) and schedule a service visit.

### Parts Included

KIT PN: 93-2185, FILTER, VECTOR DRIVE INTAKE KIT. QTY: 1



**[A]** 25-10466A  
QTY: 1  
VEC DRV INTAKE FILTER POCKET



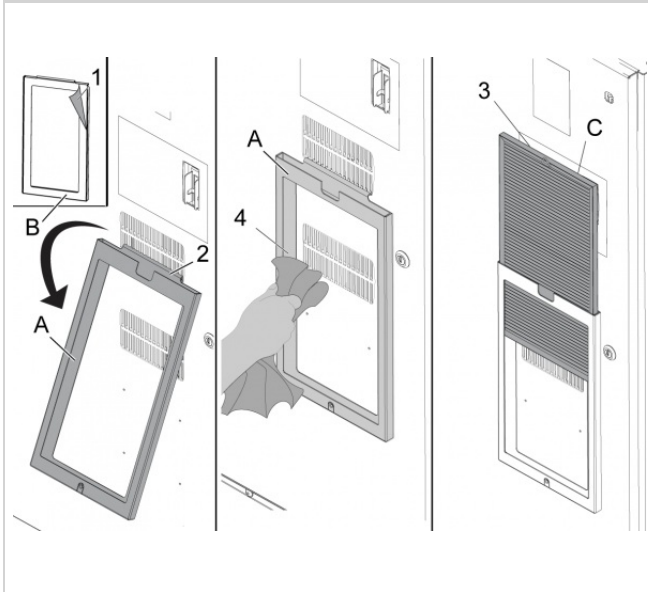
**[B]** 57-0537A QTY: 1  
GASKET, VECTOR DRIVE INTAKE  
FILTER



**[C]** 59-1393 QTY: 1  
FILTER, CHILLER INTAKE VENT

# Electrical Cabinet - Vector Drive - Intake Filter - Installation

## STEP 1



Clean the electrical cabinet door around the vector drive air intakes with alcohol.

Put the GASKET [B] on the FILTER POCKET [A].

Remove the paper [1] that covers the adhesive on the GASKET [B].

Attach the top hook of the FILTER POCKET [A] to the bottom edge of the upper door vent opening [2].

Press down on the edges [4] of the FILTER POCKET [A] to attach it to the electrical cabinet door.



**Note:** Make sure that the coarse side of the VENT FILTER [C] (the side with the pull tab [3]) faces out.

Insert the VENT FILTER [C] into the frame until it clips into place.

## Conclusion

### Filter Maintenance

1. Check the filter at regular intervals for dirt.
2. Remove the filter from the frame.
3. Clean the filter with warm soapy water and a soft brush.
4. Rinse the filter with warm water and dry it.
5. Insert the filter into the frame until it clips into place.



**Note:** Make sure that the coarse side of the filter (the side with the pull tab) faces out.